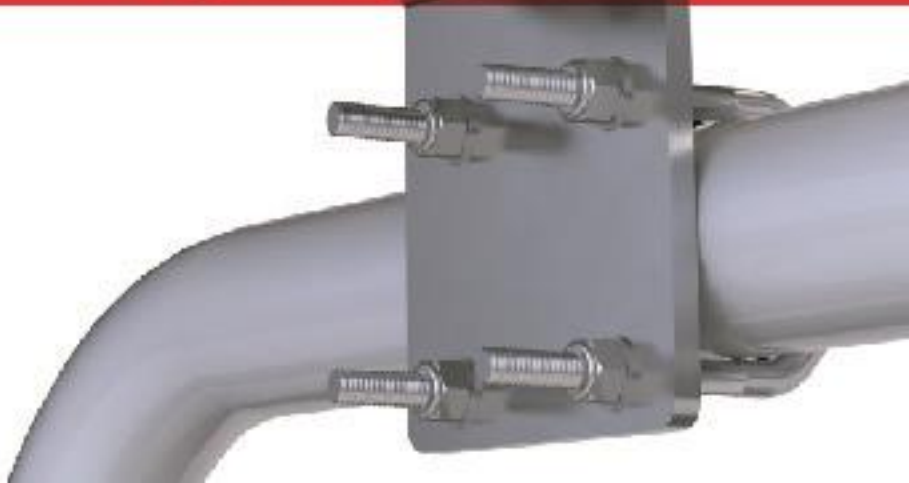




ASE | SOLUTIONS



Q1 2014 WEBINAR SERIES 1



- *Resilience
Solutions -*



- *M2M
Applications -*



- *Maritime
Implementations -*

APPLIED SATELLITE ENGINEERING

- *founded 2004*
- *Iridium value added manufacturer 2004*
- *USA headquarters - Scottsdale, Arizona*
- *EMEA office - Galway, Ireland*



ASE Market Segments



Hospitals and Health Care Facilities



Utilities and Infrastructure Services



Corporate Resiliency



Oil and Gas Industries



DOD and Military Services



NGO and Non-Profit Organizations



Emergency Response Providers

VOICE
+
GPS

SAFE ROOM SOLUTION



 iridium
Everywhere

ASE CITADEL SAFE ROOM

VOICE and GPS REPORTS

- Iridium Satellite Voice *Complete* Global Coverage
- Small profile/Hidden solution
- Simple installation at *ANY* distance on the ship
- GPS with emergency and periodic reporting
NEW! Remote polling/configuration!
- Multiple phones available on one system
- Optional long-life battery backup
- View position from *inside* the Citadel
NEW! Streaming NMEA GPS positions!

ASE CITADEL

Remote Query and Configure

Remote Queries*

- current position

Remote Configure*

- auto reporting on:off
- auto reporting: interval
 - intervals set at 30min, 60min
4 hr, 8 hr, 12 hr, 24 hr, 48,hr, 1 week
- set vessel name
- set new password
- set new email for report

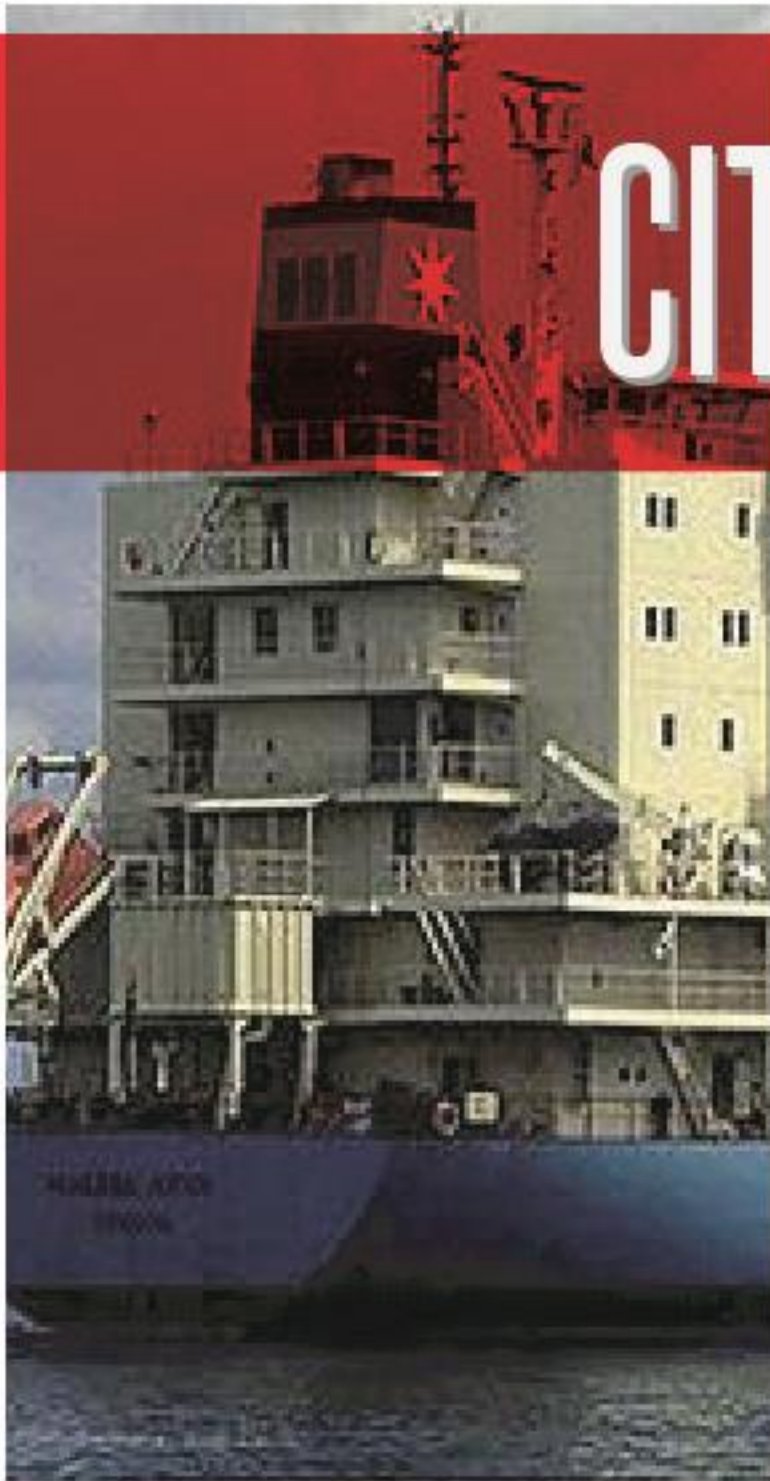
* (must know current password -
can be set/reset by phone in Citadel)

ASE CITADEL Simple Install



- Small antenna and transceiver with voice and GPS
- Corded phone in lockable cabinet
- Optional long-life battery backup
- Any distance on ship with no cable issues
- Additional Captain's phone can be added to bridge with same system

CITADEL MOUNTING



ASE CITADEL SYSTEM

FUNNEL MOUNTING



ASE CITADEL SYSTEM

FUNNEL MOUNTING



VIEW FROM FUNNEL

ASE CITADEL SYSTEM

FUNNEL MOUNTING

- single cable easily routed from funnel
- terminate at junction box or extend as needed



FUNNEL TOP

ASE CITADEL SYSTEM

FUNNEL MOUNTING





CITADEL ECOSYSTEM

ASE CITADEL SYSTEM

COMCENTER OUTDOOR



22 CM



28 CM

- Maritime Certified IEC 60945
- Powerful system in compact form factor
- Easily hidden from view in funnel or other locations
- Available in white or black outer shell

ASE CITADEL Corded Phone



- corded phone in lockable cabinet



- dialing instructions located inside cover

ASE CITADEL Battery Backup

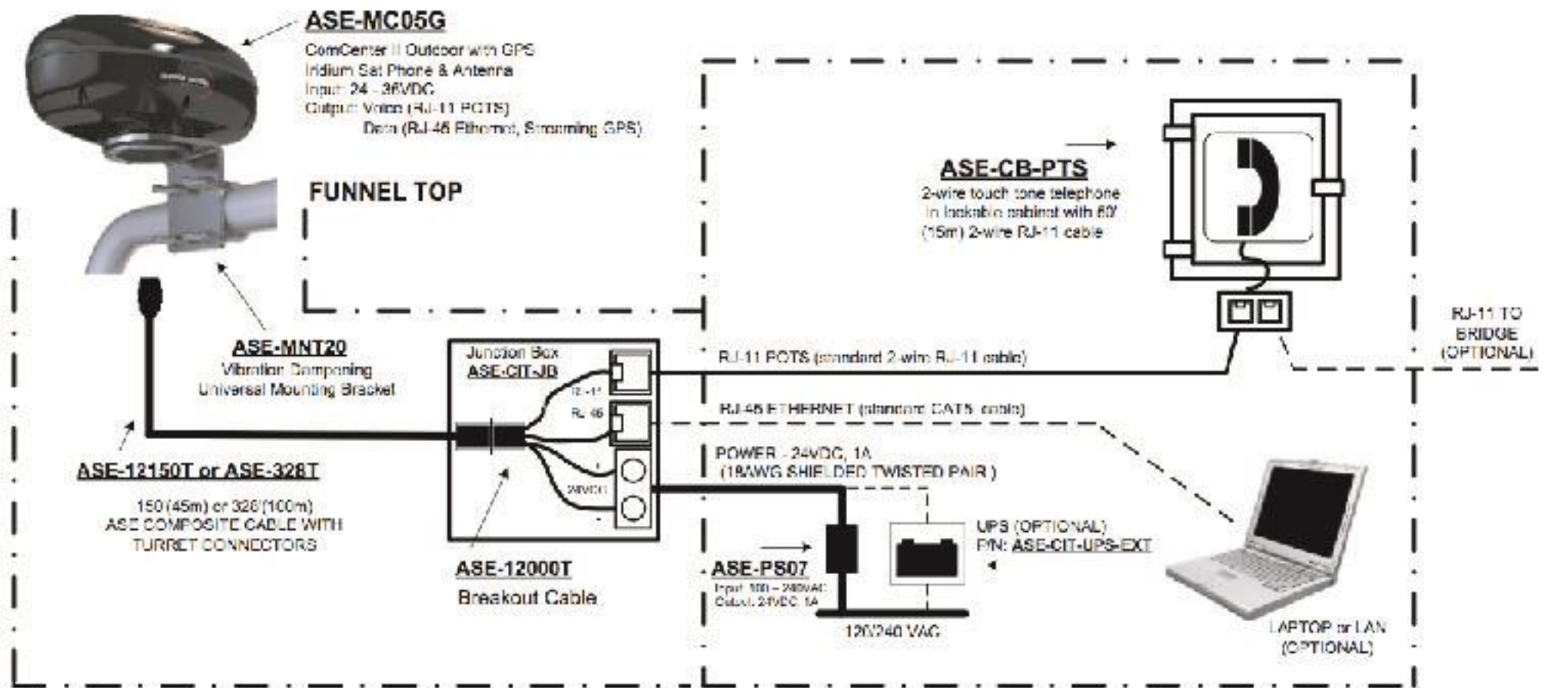


- purpose built for maritime applications
- 7 days + periodic
- 100 hours at powered/active state
- 55 hours talk



ASE CITADEL SYSTEM

WIRING DIAGRAM



[328 feet (100m) option]
 150 feet (45m) standard
 [150 ft option can be extended with 20'(6m),
 50'(15m), and 100'(30m) lengths]

Up to 250'(78m) (Power & Ethernet Data)
 Up to 7,500'(2285m) (RJ-11 Voice)

Combined Max Cable Lengths
 RJ-11 Voice: 8,000' (2438m)
 RJ-45 Ethernet data: 400'(122m)
 Power: 400'(122m) (18 AWG)