

# ASE RESILIENCE SOLUTION

## Permanent-Satphone Comcenter Indoor-MC08



### SUMMARY OF KEY FEATURES

- PROVIDES OFFICE/IN-BUILDING SOLUTION FOR IRIDIUM SATPHONE
- NON REMOVABLE
- PERFECT FOR HIGHLY TRAFFICKED AREAS
- EASY CONNECTION TO IRIDIUM ANTENNA FOR INDOOR USE
- PROVIDES VOICE CONTINUITY IN DISASTERS--NATURAL OR MAN-MADE
- RELIABLE ASE EQUIPMENT

## ASE-MC08 Iridium SatPhone Solution

Shown below are the components that are included with, or needed for the ASE-MC08.



### Antenna Solutions

Antennas and cable systems for HQ applications. We recommend our premium filtered for Urban and Hospital environments.

**Purchase separately-**



### Power Brick AC/DC

Reliable AC/DC Power Supply. Please specify Country Type.

**Included in the Kit.**



### Dedicated Phone

We recommend the PT01 with Dialing Instructions. (Can integrate with any office phone.)

**ASE PT01**



ASE-MC08		
Voltage	10-32 VDC	Cable or DC Adapter
Power	12 Watts	Active Peak
Antenna Connections	Iridium TNC-F	
Operating Temp	-10 to 55 C	
Dimensions	9x 5 x 2.5 in.	23 x 15 x 13 cm
Weight	2 lbs.	0.9 kG
Shipping Weight	6.0 lbs.	3.0 kG
Shipping Dimensions	16 x 14 x 8 in.	41 x 36 x 20 cm

## IRIDIUM PERMANENT INSTALL SATELLITE PHONE

rev 1.1

### ADDITIONAL FEATURES/COMPONENTS



#### Easy Office Integration

Use with Office Phones

**Can integrate with any office.**  
We recommend the ASE-PT01



#### -H Local Handset-

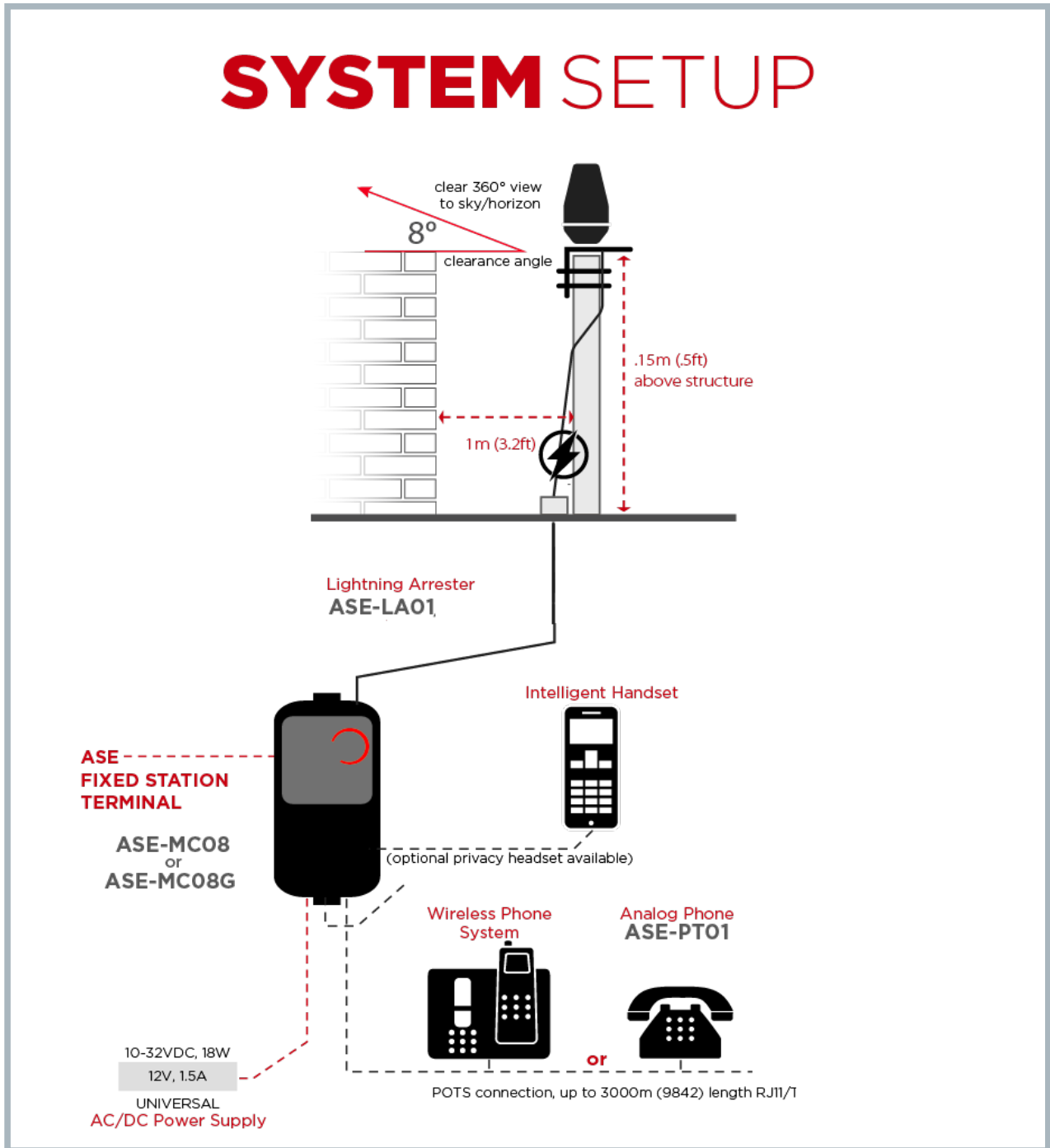
Local Handset available.  
**Purchase by adding -H**  
ASE MC08-H



#### Antennas go the Distance

Passive Antennas up to 20 Meters. Active Antennas up to 105M  
**Antennas not included-  
Purchase separately.**




# EXAMPLE INSTALLATION



MC08 Installation Diagram

# MC08 PACKAGES and COMPONENTS

## Shipping Information

<b>ASE-MC08</b>	ComCenter II Indoor - fixed station iridium voice terminal	
	Harmonized Code - HTS#: 8517.62.0050 ECCN: 5A992.a Shipping Dimensions: 16 x 14 x 8, 6 LBS (41cm x 36cm x 20cm, 3 kg)	
<b>ASE-MC08-H</b>	ComCenter II Indoor - fixed station iridium voice terminal	
	Harmonized Code - HTS#: 8517.62.0050 ECCN: 5A992.a Shipping Dimensions: 16 x 14 x 8, 6 LBS (41cm x 36cm x 20cm, 3 kg)	
<b>ASE-PT01</b>	POTS Station - includes POTS phone, mount plate, and instruction placard	
	Harmonized Code - HTS#: 8518.30.2000 ECCN: EAR99 Shipping Dimensions: 16 x 14 x 8, 5 LBS (41cm x 36cm x 20cm, 2 kg)	

## ASE ANTENNA AND CABLE OPTIONS:



### CABLE LENGTHS and ANTENNA OPTIONS:

- ASE-PFA12 - 39' (12 meters) LMR600
  - premium passive filtered antenna, lightning arrester, and mounting bracket
- ASE-PFA20 - 66' (20meters) LMR600
  - premium passive filtered antenna, lightning arrester, and mounting bracket
- ASE-PFA27 - 100' (27 meters) LMR200
  - premium active filtered antenna, lightning arrester, interface box, and mounting bracket
- ASE-PFA40 - 131' (40 meters) RG213
  - premium active filtered antenna, lightning arrester, interface box, and mounting bracket
- ASE-PFA70- 230' (70 meters) LMR400
  - premium active filtered antenna, lightning arrester, interface box, and mounting bracket
- ASE-PFA88 - 289' (88 meters) LMR500
  - premium active filtered antenna, lightning arrester, interface box, and mounting bracket
- ASE-PFA105 - 344' (105 meters) LMR600
  - premium active filtered antenna, lightning arrester, interface box, and mounting bracket
- ASE-FA12 - 39' (12 meters) LMR400
  - passive antenna, and mounting bracket
- ASE-FA20 - 65' (20 meters) LMR600
  - passive antenna, and mounting bracket

# Contact ASE

## ASE-HEADQUARTERS

16559 N. 92nd Street  
Scottsdale, Arizona  
85260  
USA

Phone +1 480 443 1424

E-mail [info@ase-corp.com](mailto:info@ase-corp.com)



[www.ase-corp.com](http://www.ase-corp.com)

**ASE**  
APPLIED SATELLITE ENGINEERING