

Voice + GPS Safe Room Solution

Safe Room Voice + GPS Reports

CITADEL SOLUTION | ASE



ANTI-PIRACY BEST PRACTICES

Muster ALL Crew inside a "Safe" Room-Citadel

Deny Pirates Control of Propulsion

Contact NATO Defenses from a "Satellite" Phone

Safe Room Voice + GPS Reports



CITADEL SOLUTION | ASE



NATO FORCES WILL ONLY GUARANTEE A RESPONSE IF

ALL Crew inside a "Safe" Room-Citadel

Pirates are Denied Control of Propulsion

Citadel has Food/Water Comfort for 72 Hours

Crew can Phone NATO Defenses from a "Satellite" Phone

Satellite Phone must have 72 Hours Open Line Backup

Safe Room Voice + GPS Reports



CITADEL SOLUTION | ASE



ADDITIONALLY

GPS-Shipping Companies want frequent GPS Reports

In Addition, they seem to want Crew to be able to view

Our Citadel System can report via * 9 1 1

Connected to a Laptop, Crew can view Position

Can easily integrate into Tracking Solution

Safe Room Voice + GPS Reports



System-Simple to Install

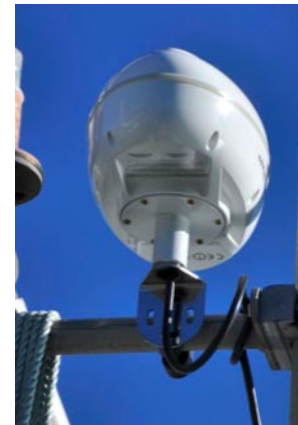
- **Small, Antenna + Transceiver**
 - **Satellite Voice + GPS**
- **Any Distance on Ship!**
- **Corded Phone in Lockable Cabinet**
- **Optional Battery Back-up**
- **Additional Captain's Phone Can be added on Bridge using same system (Wireless or Corded)**



Safe Room Voice + GPS Reports

Comcenter Outdoor

- Easily Hidden From View—
- Funnel or other Locations
- Maritime Certified IEC 60945



22 cm



28 cm

Safe Room Voice + GPS Reports

CITADEL SOLUTION | ASE



ASE CITADEL COMCENTER OUTDOOR SYSTEM

VOICE COMMUNICATION
+GPS

MAINLINES ROUTED SECURELY THROUGH SHIP INTERIOR

Mechanical Specifications
Dimensions: 27.94L x 15.24W x 12.7H (cm) Weight: 1.36kg Mounting: Pole or Surface

Safe Room Voice + GPS Reports



- **Single Cable Easily Routed from Funnel**
- **Terminate at Junction Box or extend as needed**



CITADEL SOLUTION | ASE



- View from Funnel



Safe Room Voice + GPS Reports



CITADEL SOLUTION | ASE



- Mounting Shown in Funnel



Safe Room Voice + GPS Reports

CITADEL SOLUTION | ASE



- Funnel View

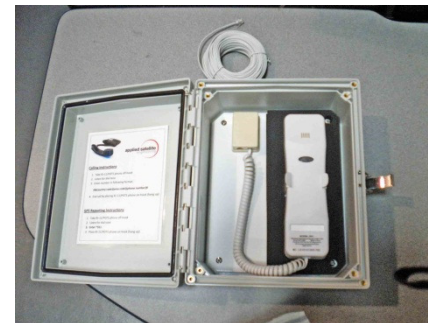


Safe Room Voice + GPS Reports

CITADEL SOLUTION | ASE

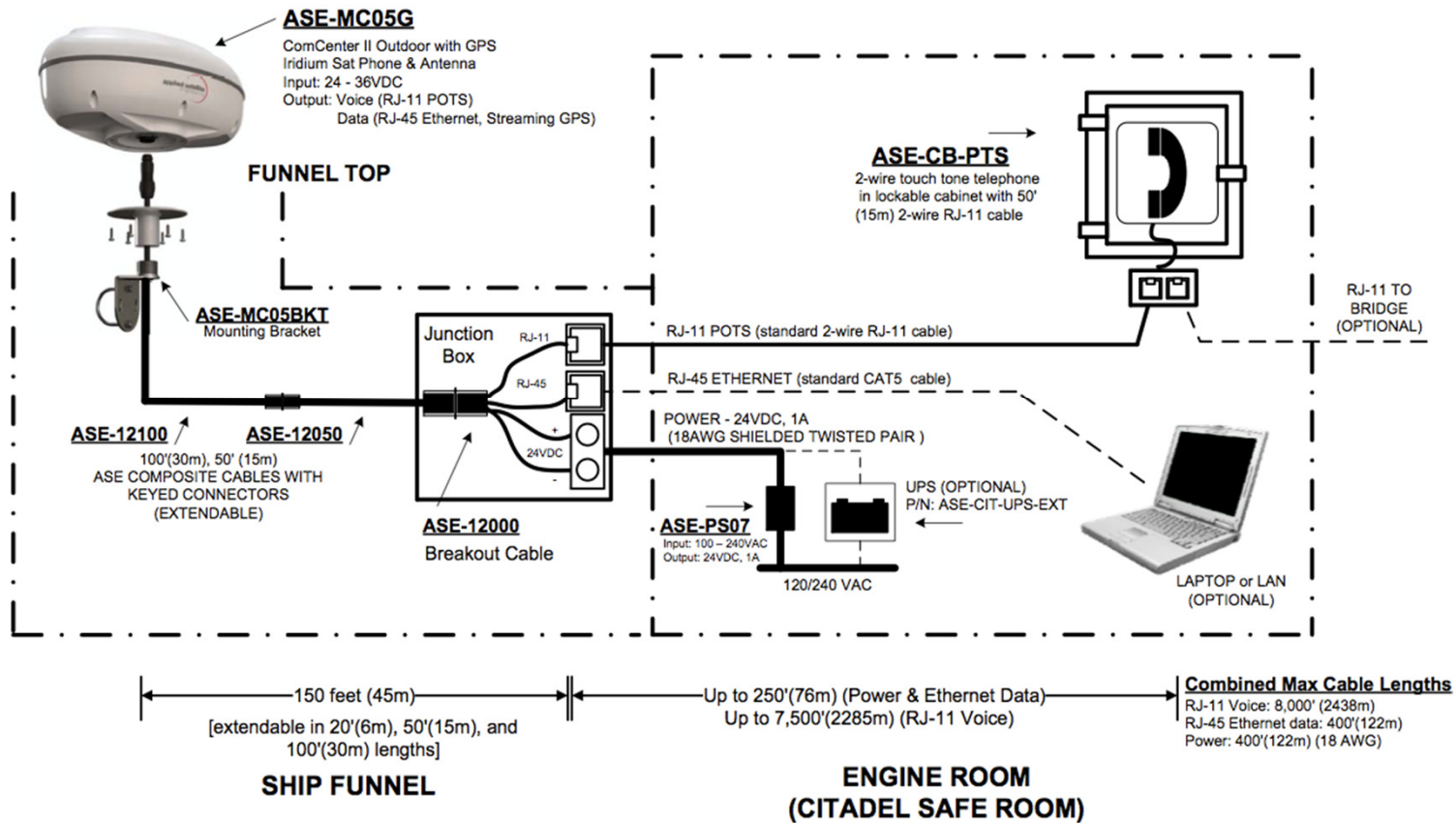


- **Corded Phone in Latchable Cabinet**
- **Dialing Instructions Located inside Cover**



Safe Room Voice + GPS Reports

CITADEL SOLUTION | ASE



Safe Room Voice + GPS Reports



CABLE

Ships with a 150' (45M) Cable

Cable has Power (+/- 24V), Phone, Data

Phone-RJ11, Data RJ45

Additional "Snap-together" Lengths 20,50,100,150'

Ship can run its own cabling with adaptor/junction box

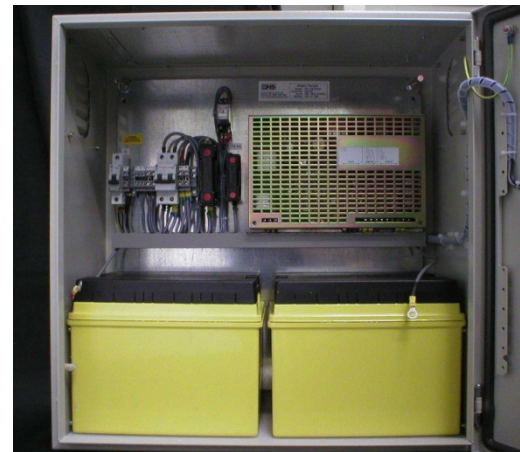


Safe Room Voice + GPS Reports

CITADEL SOLUTION | ASE



- **Battery Backup-100 Hours
Powered Active/ 55 Hours Talk**
- **Meets NATO Requirements (72
Hours "Open" Line**
- **7 Days + Periodic**
- **Purpose Built-Maritime Application**



Safe Room Voice + GPS Reports

FAQ

Cable Lengths-Snap Together-Any Distance

**data*

Colours-Black and White (Can paint)

GPS Reports-Crew can view on laptop, can stream*

Funnel Installation-OK for 50 degrees C

Must clean every 6 months